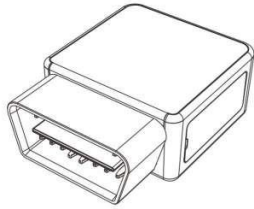
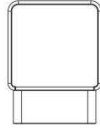


GPS TRACKER

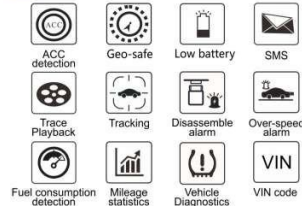


Please read the installation instruction manual carefully before installation and use.

1 Appearance



2 Product Features



*The OBD device is suitable for most vehicle models

3 Inside The Box

Check your product for the following items

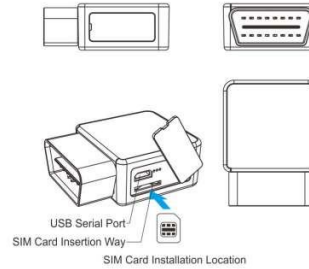
• Device X 1 • User manual X 1

4 Product Parameters

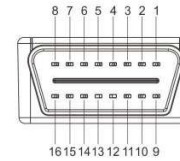
Name	Parameter
Power Supply	Battery
Working Voltage	DC 9V - 35V
Working Current	12V/73.6mA
Sleep Current	12V/38.2mA
Built-in Battery	80 mAh (3.7V Polymer Battery)
Working Temperature	-20°C - 75°C
Locate Mode	GPS/BDS/LBS
Size	58mm * 45mm * 22mm
Location Accuracy	±5m (The data is only for references; The positioning error is related to geography, time, etc.)

5 Structure Declaration

View of Structure Declaration

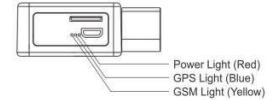


6 Interface Definition Table



Definition	Pin	Definition	Pin
1	N/A	9	N/A
2	N/A	10	N/A
3	N/A	11	N/A
4	GND	12	N/A
5	GND	13	N/A
6	CAN H	14	CAN L
7	K BUS	15	L BUS
8	N/A	16	B+

7 Indicator Light Definition



Red (Power Light)	Description
Long Bright	Working
No Lights	Sleep Mode/Shut Down

Yellow (GSM Light)	Description
Fast Blinking	GSM Initialization
Slow Blinking	GSM Working Normally
Long Bright	GSM In Sleep Mode

Blue (GPS Light)	Description
Fast Blinking	Searching For GPS Signal
Slow Blinking	GPS Working Normally
No Lights	GPS In Sleep Mode

8 Functions

1. Disassemble Alarm

When the terminal power is cut off, the machine disassemble alarm will be triggered, and the terminal will send out a 'disassemble alarm' to the platform.

2. Geo-fence

After setting up the fence area and selecting the alarm conditions on the platform, the alarm will be triggered according to the alarm conditions in order to remind the service platform, when the terminal enters or leaves the fence area.

3. Overspeed Alarm Threshold

The vehicle speed limit threshold can be set through the platform or SMS. When the vehicle's driving speed within the set time is faster than the speed threshold, a overspeed alarm will occur.

4. Timeout Alarm

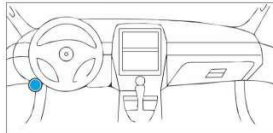
After the vehicle stops, if the parking time exceeds the set time, the parking timeout alarm will be pushed.

5. ACC turns on/off the alarm

When ACC is on or off, the platform will push the alarm

9 Product Installation

Installation Diagram



Insert the device directly into the vehicle OBD interface, which is normally located under the car control of the main driving parts or in the plaques of some vehicle models. Insert the device into OBD interface and check if it is firm. If the positioning indicator light flashes normally, it works!

10 Precautions

In order to avoid failing to normal operation due to incorrect connection, please make sure the OBD tracking device is installed properly, which is not easy to be shaken.

11 Quick Operation Instructions

1. APN setting

To ensure GPRS is activated, please make sure APN is correct. You can send SMS command to set APN.

APN command
Format: APN123456 APN's Name
Eg: APN123456 internet
(*internet is the APN of carrier)

2. Server Setting

Default platform is www.wanwaygps.com
To connect other platform, please send the SMS command to change the server IP:

Domain setting
Format: IP Domain Port

Eg:
IP WW9808.gpsog.com 9808

3. Check Param Setting

You can check the parameter setting by command: CXZT
Eg: CXZT

Reply Content includes:
ID、IP、APN、ACC、GPRS、GPS, etc.

12 Operation of Device

Check Location

Via platform
Go to the platform website offered by dealers to check your vehicle location.

13 Trouble Shooting

Problem	Description	Solution
Failed to connect the internet	SIM card not installed	Check the sim card
	Simcard not installed properly	Install again
	No GSM network	Move the device in gam network area
Location failed	Weak GSM network	Move the device in strong GSM network area
	SIM card has no gprs functions	Contact Sim-card applicler to activate the gprs function
No GPS location	'Always reply 'Failed to get location'	Contact the supplier
	Some poor signal areas like basement, tunnels are not able to receive GPS signals.	Move the device to open sky areas.

14 Access to Platform

1. Platform (www.wanwaygps.com)
2. Android and IOS APP(Scan the qr code to download app)



There are two methods to login in the platform or app.

1. Login by IMEI number(the 15 digits in the back of the device), password: the last 6 digits of imei number.

2. Contact the supplier to create an account for you.